

© 2004 Structural Research and
Analysis Corporation (SRAC)
12121 Wilshire Blvd., Suite 700
Los Angeles, California 90025-1170
310 207-2800 (phone)
310 207-2774 (fax)

All rights reserved.

Structural Research and Analysis Corp. (SRAC) is a
Dassault Systemes S.A. (Nasdaq: DASTY)
company.

Information is subject to change without notice. No
material may be reproduced or transmitted in any
form or by any means for any purpose without
written permission of SRAC.

As a condition to your use of this software, you
agree to accept the limited warranty, disclaimer and
other terms and conditions set forth in SRAC
License Agreement which accompanies this
software. If, after reading the SRAC License
Agreement, you do not agree with its terms and
conditions, promptly return the unused software and
all accompanying material to SRAC and your
payment will be refunded.

COSMOS™, COSMOSWorks™,
COSMOSMotion™, and COSMOSFloWorks™
are trademarks of SRAC.

ANSYS™ is a trademark of SAS IP.

MSC® and MSC/® are registered trademarks of
MacNeal-Schwendler Corporation.

NASTRAN® is a registered trademark of the
National Aeronautics and Space Administration.

PATRAN® is the registered trademark of PDA
Engineering

Acrobat™, and Acrobat Reader™ are trademarks
of Adobe Systems Incorporated.

IGES™ Access Library is a trademark of IGES
Data Analysis, Inc. Other brand or product
names are trademarks or registered trademarks of
their respective holders.

Portions of this software © 2004 Solversoft, Inc.

Portions of this software © 2004 Simulog
Technologies. A Business Unit of SIMULOG S.
A.

Portions of this software © 2004 Computational
Applications and System Integration, Inc.

Portions of this software © 2004 Unigraphics
Solutions™, Inc.

Portions of this software © 2004 Visual
Kinematics, Inc.

Portions of this software © 2004 DC
MicroDevelopment, Inc.

Portions of this software © 1999, 2004
ComponentOne.

Portions of this software © 2004 D-Cubed Ltd.

Contents

Chapter 1: Introduction

Getting your License from the Web	1-1
COSMOS EDU Bundles	1-1
Web Resources	1-2
After Installing COSMOS EDU	1-3

Chapter 2: Installation Procedures

Section 1: For the Typical COSMOS EDU User	2-2
Installation types	2-2
The Installation Source	2-2
Running COSMOS EDU Applications	2-4
Removing the Installation	2-4
Section 2: For System Administrators	2-4
Creating an Administrative Image	2-4
Removing an administrative image	2-5
Section 3: To install and configure the COSMOS license service	2-5
Section 4: Silent Installations:	2-6
Passing properties to a silent installation:	2-6
Description of Properties	2-8

Chapter 3: COSMOS License Administrator

Types of COSMOS Licenses	3-1
Floating License	3-1
Node-locked License	3-1
Hardware-based License	3-1
Demo License	3-1

Features of the COSMOS License Administrator	3-2
FLEXlm Capabilities	3-2
Status Tab	3-3
Information Type	3-3
Refresh	3-4
Configure License	3-4
Configure COSMOS License	3-4
Select COSMOS License File	3-4
Set Port and Host of the License Server	3-5
System Settings Tab	3-5
Request New License	3-5
Authorized Modules Tab	3-5
Available COSMOS License Files	3-6
Server Settings Tab	3-6
Configuring Redundant License Servers	3-7
Current Usage tab	3-8

Introduction

This chapter outlines what you need to do before and after installing the software and summarizes the analysis capabilities of COSMOS EDU bundles. It also provides a list of web resources where you can find information on the software updates, knowledge base, and users forum.

Getting your License from the Web

To get your EDU license from the web, go to the website: <http://www.solidworks.com/pages/products/edu/index.html> and click on the link **COSMOS EDU License Request**. You need to enter serial number of your SolidWorks version.



To find your SolidWorks Serial number, click **Help, About SolidWorks**.

COSMOS EDU Bundles

The following table lists the available bundles, types of analyses, and required licenses. Manuals are available in PDF (Portable Document Format) files.



The COSMOS License Administrator is a program that helps you administer your license(s). Refer to the *COSMOS License Administrator* chapter for details.

Bundle/Add-on	Electronic Manuals	Authorized Analyses	Licenses
COSMOS EDU	<ul style="list-style-type: none"> ✓ COSMOSWorks Student Workbook ✓ Introducing COSMOSWorks ✓ COSMOSMotion User's Guide ✓ Introducing COSMOSFloWorks ✓ COSMOSFloWorks Tutorial 	<ul style="list-style-type: none"> • Linear stress • Frequency • Buckling • Thermal • Motion Simulation • Fluid Flow 	CW_EDUPARTS CW_EDUASSEMBLIES LINEAR_STATIC LINEAR_FREQ_BUCK THERMAL COSMOS_EDUMOTION COSMOS_EDUFLOWO RKS_STD
COSMOS Advanced EDU	<ul style="list-style-type: none"> ✓ COSMOSWorks Student Workbook ✓ Introducing COSMOSWorks ✓ COSMOSMotion User's Guide ✓ Introducing COSMOSFloWorks ✓ COSMOSFloWorks Tutorial ✓ COSMOSDesignSTAR User's Guide ✓ Nonlinear Stress Analysis User's Guide and Tutorial ✓ COSMOSM Getting Started 	<ul style="list-style-type: none"> • Linear stress • Frequency • Buckling • Thermal • Motion Simulation • Fluid Flow • Nonlinear stress • Fatigue • Advanced Dynamics 	CW_EDUPARTS CW_EDUASSEMBLIES LINEAR_STATIC LINEAR_FREQ_BUCK THERMAL COSMOS_EDUMOTION COSMOS_EDUFLOWO RKS_STD DS_PARTS DS_ASSEMBLIES NONLINEAR GEOSTAR FATIGUE DYNAMIC_RESPONSE

Web Resources

The following is a list of links to useful web resources for COSMOS applications:

- ❏ This URL: <http://www.cosmosm.com/support/faq.htm> points to the knowledge base web site for COSMOS products.
 - For licensing troubleshooting, use: http://www.cosmosm.com/support/license_schemes.htm
 - For participating in the forum to discuss issues related to COSMOS applications, use: <http://www.cosmosm.com/cosmosexchange/forum.htm>

After Installing COSMOS EDU

It is important to check your license after completing the installation.

To configure and verify your license:

- 1** The installation procedure installs the program files and gives you options to configure your license at the time of installation or later on.
- 2** If you chose to configure your license later on during installation, start the **COSMOS License Administrator** at your convenience to configure the license. Refer to the *COSMOS License Administrator* chapter for details.
- 3** Once you have installed the program files and configured your license, use the **COSMOS License Administrator** to verify your license. If there is a mismatch between what you are supposed to get and what the **COSMOS License Administrator** lists, please contact your sales representative immediately.
 - If the license is not working, refer to http://www.cosmosm.com/support/license_schemes.htm to troubleshoot the problem. If you still have problems, contact your reseller.

Installation Procedures

Introduction

This chapter describes how to install the COSMOS EDU application and related products using Microsoft® Windows® Installer (WI) technology. The following sections serve different installation types:

Section 1: describes tasks that the typical COSMOS EDU user performs including the installation, modification, and deletion of the COSMOS application files.

Section 2: describes tasks that a system administrator performs including the creation of administrative images on a server and the installation of the COSMOS EDU application files on computers across a network.

Section 3: describes how a system administrator can install and manage the COSMOS license service on a server machine.

Section 4: describes tasks that allow for silent installations of COSMOS EDU products.

Notes:

- ❑ This chapter is a guide to installing the COSMOS EDU application using WI. It is not intended to be an exhaustive discussion of the WI technology.
- ❑ The WI term, administrative image, is analogous to the InstallShield term, server installation.
- ❑ SolidWorks 2004-2005 Educational Edition or Student Edition is required for COSMOS 2004-2005 EDU Edition.
- ❑ The installation of COSMOS EDU is required prior to installing COSMOS Advanced EDU.

Section 1: For the Typical COSMOS EDU User

Installation types

You can install the COSMOS EDU applications using one of the following methods:

- ❑ **Individual installation of COSMOS EDU applications on the user's computer:** The COSMOS EDU applications such as COSMOSWorks, COSMOSMotion, COSMOSFloWorks, COSMOSDesignSTAR, and COSMOSM files are installed directly on the local hard drive. This installation takes up disk space on the user's computer and must be updated locally when new service packs become available. Executing the program is faster because it is not impacted by network traffic.
- ❑ **Client installation on the user's computer that references the COSMOSW EDU application files on a remote server:** The COSMOS EDU application files are not copied to the client computer, but an installation is performed to configure the license if necessary and create the registry entries, shortcuts, etc. The user runs the COSMOS EDU applications over the network using an administrative image on a remote server. This saves disk space on the local computer but program execution becomes slower with higher network traffic.



The client installation can only be performed from an administrative image. Refer to the **To install on a local computer from an administrative image** section for more details.

The Installation Source

You can install the COSMOS EDU applications in one of two ways:

- ❑ From a COSMOS EDU CD
- ❑ From the administrative image on a server across the network. Your system administrator creates the administrative image and tell you its location.

To install on a local computer from the CD:

- 1 Insert the COSMOS EDU CD into your CD-ROM drive. The setup program starts automatically. Read the **Welcome** message and click **Next**. The **COSMOS License Information** window opens.

If the setup program does not start automatically, click **Start, Run** on your Windows desktop, type in **<Your CD-Drive Letter>:\setup.bat** and click **OK** to start the COSMOS Master Setup program.

- 2 Follow on-screen instructions to copy the program files and configure your license.
- 3 Use the following tips to complete the installation. You may need to reboot your computer when the installation is complete.

Tips

COSMOS EDU Install Choice Dialog Box

- **Upgrade:** Select this option to upgrade an existing COSMOS EDU installation.
- **New Installation:** Select this option to install COSMOS EDU in a new directory.



Whether you do an upgrade or new installation, any old version of the application files installed using WI are automatically removed. Only the latest version of the application files are installed on the machine.

COSMOS EDU Options Dialog Box

COSMOS Educational edition is available in two bundles; COSMOS EDU and COSMOS Advanced EDU. The **Options** dialog allows you to choose the desired bundle. If you select COSMOS EDU, the procedure installs COSMOSWorks, COSMOSMotion, and COSMOSFlowWorks. If you select COSMOS Advanced EDU, the procedure installs, COSMOSDesignSTAR and COSMOSM in addition to COSMOS EDU products.

To install on a local computer from an administrative image:

- 1 Using Windows Explorer on your local machine, map the network drive where the administrative image of COSMOS EDU application files is installed. Ask your system administrator for this location.
- 2 Double-click the **COSMOSSetup.exe** file located in the drive mapped in the above step. Use the following installation tips for any questions during installation. You may need to reboot your computer when the installation is completed.

Tips

COSMOS EDU Install Choice Dialog Box

- **Upgrade:** Select this option to upgrade an existing COSMOS EDU installation.
- **New Installation:** Select this option to install COSMOS EDU in a new directory.



Whether you do an upgrade or new installation, any old version of the application files installed using WI are automatically removed. Only the latest version of the application files are installed on the machine.

COSMOS EDU Options Dialog Box

COSMOS Educational edition is available in two bundles; COSMOS EDU and COSMOS Advanced EDU. The **Options** dialog allows you to choose the desired bundle. If you select COSMOS EDU, the procedure installs COSMOSWorks, COSMOSMotion, and COSMOSFlowWorks. If you select COSMOS Advanced EDU, the procedure installs, COSMOSDesignSTAR and COSMOSM in addition to COSMOS EDU products.

Running COSMOS EDU Applications

In your Windows desktop, click **Start, Programs, COSMOS 2004 Applications**, and launch the desired product.

Removing the Installation

If there are no active SolidWorks sessions, you can delete the installation by doing the following:

- 1 In your Windows desktop, click **Start, Settings, Control Panel**.
- 2 Double-click **Add/Remove Programs**.
The **Add/Remove Programs** dialog box appears.
- 3 Select the appropriate COSMOS product from the list.
- 4 Based on your operating system, click the appropriate button to delete the installation.

Section 2: For System Administrators

The following topics address the needs of system administrators:

- ☐ Creating an administrative image of the COSMOS EDU installation on a server machine.
- ☐ Removing an administrative image.

Creating an Administrative Image

To serve the COSMOS EDU application files across a network, you create an administrative image of the COSMOS EDU application files on the server's hard drive. You can install the administrative image from any computer on the network. Browse the network for the location on the computer that will act as the server for the COSMOS EDU application. You can also create an administrative image on the client computer by specifying a folder on its local hard drive.

The resulting administrative image is a tree of folders that contains all the distributed files in an uncompressed format. The administrative image occupies a large amount of space on the server's hard drive. Once the administrative image is created, you can start additional installations on other computers in the network from this server location.

Client computers can access the administrative image to run the COSMOS EDU applications on their local computers. You must perform a client installation on each client computer before it can access and use the COSMOS EDU applications on the server.

To create an administrative image:

- 1 Insert the COSMOS EDU CD into your CD-ROM drive.
- 2 In your Windows desktop, click **Start, Programs, Accessories, Command Prompt**.
- 3 In the **Command Prompt** window, enter:

msiexec /a <Msi_path>

The variable *Msi_path* represents the path and filename of the .msi file for your operating system and language. The installation package file name is constructed as follows:

COSMOS_<language>.msi

A sample command line is:

msiexec /a F:\cwwi\MainInstall\COSMOS_English.msi

The **COSMOS EDU Installation Wizard** appears.

- 4 Follow on-screen instructions. In the **License** dialog box, make sure that you choose the network (floating) license where the hostid matches the hostid of the machine you are installing the administrative image on. Otherwise, the licensing fails. Note that you can skip the license configuration step if you just want to create the administrative image of COSMOS EDU application files on the remote machine.

Removing an administrative image

To remove an administrative image from the server:

- 1 Make sure to close all COSMOS EDU applications.
- 2 Make sure that the COSMOS EDU application is uninstalled from all the client machines on which it was installed.
- 3 Delete the administrative image from the server's hard drive.

Section 3: To install and configure the COSMOS license service

The COSMOS Network license manager installation allows you to install only the license files as well as to configure the COSMOS License Server Service on a server machine. You cannot run COSMOS on the server machine using this installation. However, you can install COSMOS on any client computer across the network using the procedure: To install on a local computer from CD or To install on a local computer from an administrative image described in the last sections. During the client installation, you can simply point specify to access the license from the server machine.

To install the COSMOS Network License Manager:

- 1 Insert the COSMOS EDU CD into your CD-ROM drive.
- 2 From the CD menu, choose the second button "Install COSMOS Network License Manager". The Installation starts up.
- 3 Follow on-screen instructions to copy the license files as well as to configure the COSMOS License Server Service on the server machine.

You can use the COSMOS License Administrator located under Start→Programs→COSMOS Network License Manager; to check or reconfigure, your

license based on the license file. If you do not have the file, the COSMOS License Administrator lets you request it through the Internet.

Section 4: Silent Installations:

Passing properties to a silent installation:

To start a silent installation (without the display of a user interface or dialog boxes) use the **/i** and **/qb** options of the msiexec.exe command. Set the global properties for those installation options that you want to be different from the default values.

Examples

Suppose that your computer has the following options:

- Installation source pointing to the msi file package <CD driveletter>:\cwwi\MainInstall\COSMOSWorks\i386_COSMOSWorks_English.msi
 - English language
 - At location **C:\Program Files\<your_preferred_folder>**
 - Location of SolidWorks application: **C:\Program Files\<SolidWorks_folder>**
- ☐ To perform an individual installation of COSMOSWorks from the COSMOS EDU CD on this computer, enter the following command:

```
msiexec /i "<CD drive letter>:\cwwi\MainInstall\COSMOSWorks\
i386_COSMOSWorks_English.msi"
INSTALLDIR= "C:\Program Files\<your_chosen_folder>"
SOLIDWORKSPATH= "C:\Program Files\<SolidWorks_folder>"
SWDISTSUBTYPE=2 /qn
```

- ☐ If you have received a license and would like to configure it, add the property, **LICENSEFILEPATH** to the command line as follows:

```
msiexec /i "<CD drive letter>:\cwwi\MainInstall\COSMOSWorks
\i386_COSMOSWorks_English.msi"
INSTALLDIR= "C:\Program Files\<your_chosen_folder>" SOLIDWORKSPATH=
"C:\Program Files\<SolidWorks_folder>" SWDISTSUBTYPE=2
LICENSEFILEPATH = "<folder_path \license.dat" /qn
```

- ☐ The msi package name contains the installation language. For example, the path to the msi installation of the **French** version of COSMOSWorks is:

```
"<CD drive letter>:\cwwi\MainInstall\COSMOSWorks\i386_COSMOSWorks
_French.msi"
```

- The following paths are available to install COSMOSWorks in other languages:

Chinese
Chinese-Simplified
English
French
German
Italian
Japanese
Korean
Polish
Russian
Spanish



The above language list is valid for COSMOSWorks only. COSMOSMotion is available in English, Chinese, French, Italian, German, and Japanese. COSMOSFloWorks is available in English and Japanese. COSMOSDesignSTAR is available in English, Chinese, French, German, and Japanese. COSMOSM is available in English only.

Notes:

- ❑ Follow a similar procedure to install other COSMOS EDU products like COSMOSMotion, COSMOSFloWorks, COSMOSMotion, COSMOSDesignSTAR and COSMOSM. Each of these products is placed on a separate folder on the CD. This folder name is the same as the product name.

- ❑ To perform **Administrative Installation** silently, enter the command:

msiexec /a "<path to the msi file>" TARGETDIR= "<path to install administrative image>" /qn

- ❑ To perform **Client Installation** from an administrative image silently, enter the command:

msiexec /i "<path to the msi file>" INSTALLDIR= "<path to install COSMOSWorks>" SOLIDWORKSPATH= "<path to SolidWorks>" SWDISTSUBTYPE=2 /qn

- ❑ To configure the license of a client machine to point to the server machine whose HostName is host1 and the server port is 7585, enter the command:

msiexec /i "<path to the msi file>" INSTALLDIR= "<path to install COSMOSWorks>" SOLIDWORKSPATH= "<path to SolidWorks>" SWDISTSUBTYPE=2 SELECTIONWITHLICENSE = "2" LICENSEPORT = "7585" LICENSEHOSTNAME = "host1" /qn

Description of Properties

Property	Description and format
TARGETDIR	Specifies the installation folder for a particular COSMOS application software Defined for administrative installations only.
INSTALLDIR	Specifies the installation folder for a particular COSMOS application software Defined for individual installations only.
SOLIDWORKSPATH	Specifies the folder where SolidWorks is installed. Defined for individual installations, client installation from an administrative image.
SWDISTSUBTYPE	Specifies SolidWorks edition installed on the computer. 0: Commercial Edition 2: Educational Edition 3: Student edition
LICENSEFILEPATH	Specifies where you have the COSMOS license file on your computer. After the installation, this file is automatically copied into the COSMOS installation directory Defined for individual installations, client installation from an administrative image.
SELECTIONWITHLICENSE	1: If you want to point to a license.dat file 2: If you want to use the portnumber@hostname option to access the license from a server machine Defined for individual installations, client installation from an administrative image.
LICENSEPORT	Port number of the server machine. This property must be specified if you are using the property SELECTIONWITHLICENSE ="2" in the command option
LICENSEHOSTNAME	Host name of the server machine. This property must be specified if you are using the property SELECTIONWITHLICENSE ="2" in the command option

COSMOS License Administrator

Types of COSMOS Licenses

All licenses require a **license.dat** file. The following types of licenses are available for COSMOS EDU products:

Floating License

License authorized for use on a network. Any computer on the network can be set to use the floating license. At any time, the number of computers running a product may not exceed the authorized number of licenses. Only a license file is needed.

Node-locked License

License authorized for a specific computer. Only a license file is needed.

Features of the COSMOS License Administrator

In the process of administrating your COSMOS License, the **COSMOS License Administrator** helps you:

- Find out the host ID and name of your machine.
- Find out your hardware lock(s) number(s).
- Request a license from the COSMOS web site.
- Install and start hardware lock drivers. You don't need to launch separate license configuration program to install the drivers and in most case you don't need to reboot your computer.



You do not need to reboot if you are running Windows XP, NT, or 2000.

-
- If you point to a license file, **COSMOS License Administrator** will do all the necessary procedure to setup your license.
 - Gives a detailed list of all the available modules based on your license settings. For each authorized module, this list gives the information like license type, expiration date, if failed reason for failure etc.
 - COSMOS licensing is based on FLEXlm technology. The FLEXlm license server needs to be installed on your system. **COSMOS License Administrator** let you quickly start, stop, restart, or remove the FLEXlm server.
 - For a client machine, you can point to a license file on a server machine. You do not need to setup the any system environment variables as required in earlier versions.

FLEXlm Capabilities

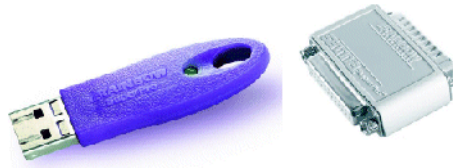
COSMOS licensing scheme is based on the FLEXlm technology which has the following features:

- Support of redundant servers: With this option, you can setup one primary server and two secondary servers. If the primary server goes down, the secondary servers will resume its COSMOS Licensing duties without any interruption.
- Client machines do not need to have read access to a *license.dat* file placed on the server. Instead you can set the client license to port@host. For example, if the FLEXlm license server runs on a machine called "Lion", you can set your client machine to access license file from 7585@Lion instead of mapping and pointing to the license directory on the server machine.



7585 is the default port for COSMOS License Server.

- If you have a node locked FLEXlm license, you need to copy the *license.dat* file to the “<COSMOS Applications>\license” directory. During the installation, you need to point to the right license file.
- The installation program gives an option to setup a FLEXlm options file.
- Dongles that connect to parallel and USB ports are available.



USB Port security Device Parallel Port Dongle



The USB port Sentinel keys work on Windows 2000 and Windows XP (windows NT is not supported).

- Multiple dongles can be configured with an associated license file for each dongle.

Status Tab

The **Status** tab gives information about the current status of software- and hardware-based COSMOS licenses. If you have both license schemes installed, you will be able to run a product as long as it is authorized by one of them. COSMOS licenses are based on FLEXlm technology. If both license schemes failed, click **Configure License** to select a license file on your computer or set the port and host name of a license server.

Information Type

License Information

- **Authorization.** The **Status** column tells you whether the authorization check has *Passed* or *Failed*. The **Remarks** column tells you the reason of the authorization failure.
- **License File Used.** The **Remarks** column lists the license file used. Use the **Authorized Modules** tab to select a different license file(s).
- **License Type.** The **Status** column lists the type of the detected license. A license file is needed in all cases. Refer to *Types of COSMOS Licenses* section at the beginning of this chapter.

Dongle Information

- **Sentinel Driver Detected.** The **Sentinel** driver should be installed and running for this type of license to work. The **Status** column tells you whether a license has been detected. The **Remarks** column lists the version of the detected driver, if any.
- **Sentinel Driver Running.** The **Status** column tells you whether the driver is running.
- **Sentinel Dongle Detected.** The **Status** column tells you whether a dongle has been detected. The **Remarks** column lists the model and ID of the detected dongle, if any. Multiple dongles can also be detected. In such case, the **Remarks** column lists the model and ID of each detected dongle.

Maintenance Information

- **Maintenance Number.** The **Status** column lists whether a maintenance number has been detected. The **Remarks** column lists the detected maintenance number, if any.
- **Maintenance Expiration Date.** The **Status** column lists whether a maintenance expiration date has been detected. The **Remarks** column lists the expiration date.
- **Customer Name.** The **Status** column lists whether a customer name has been detected. The **Remarks** column lists the detected customer name, if any.

Refresh

Click this button to update the status screen based on the current settings. For example, you can click this button after installing a dongle or copying a license file.

Configure License

This button opens the **Configure COSMOS License** dialog box to let you configure your COSMOS license.

Configure COSMOS License

This dialog box lets you configure your COSMOS license. To open this dialog box, click the **Status** tab and then click **Configure License**.

Select COSMOS License File

Select this option and click **Browse** to point to the license file. Although you can use this option to point to a license file on a server, it is recommended to use the other option, **Set Port and Host of the License Server**, in such a case so that the license will continue to work even if the location of the license file on the server changes. Based on the license file, the administrator will figure out the type of the license. If it detects that a dongle is required with the license file, it will automatically install the required Sentinel drivers.

Set Port and Host of the License Server

Select this option if the license file is placed on a license server. You just specify the port number and the host name. Using this option ensures that the license will continue to work even if the location of the license on the server changes.

Port Number

The default number used by COSMOS License administrator is 7585. Check with your network administrator to get another port number in case the license does not work.

Hostname of License Server

Type in the name of the computer acting as the host of your COSMOS license.

System Settings Tab

The **System Setting** tab displays the detected host name, user name, Ethernet card address, and dongle ID. If a dongle is detected and the Sentinel driver is not installed and running, click **Install Sentinel driver**. To request a new license, click **Request New License**. The Ethernet card and dongle ID's are automatically passed to this dialog box if detected. You can make the request through the web or you can fax an automatically prepared message to COSMOS.

Request New License

Select Host ID. Select a host ID from the drop-down menu (which contains detected Ethernet card address and/or dongle IDs), or type in a different ID.

License request option

- **Launch COSMOS license request web page.** Choose this option and click **OK** to file your request through the COSMOS License web page. Some of the fields are automatically filled out.
- **Write Information to file.** Choose this option and click **OK** to file your request by FAX. The administrator opens the *Notepad* text editor and automatically prepares the message. Save the file and fax it to COSMOS.

Authorized Modules Tab

The **Authorized Modules** tab lists the licensed features (modules and products).

Available COSMOS License Files

Lists available COSMOS License files. You can set as a combination of *license.dat* files and server ports identified by port@host. The items in the list of files (or port@host) should be separated by semicolons (;). For Example, *C:\Program Files\Cosmos\License\License.dat;7585@srac0369;7585@srac0370; 7585@srac0371* is a valid list. All items in the above list will be searched/queried. Click **Edit** to add a license file to the list.

Based on the list in **Available COSMOS License Files**, the table lists the availability, license count (number of simultaneous user for floating licenses), license type, expiration date, and any remarks.

Click **Refresh** to update the table based on modified list of licenses.

The **Remarks** column lists the source of the license for each product.

Server Settings Tab

The **Server Settings** tab is to be used on the *License Server* machine. Using this page, you can install and configure the COSMOS License Server.

To configure the COSMOS License Server the system administrator will need the following information:

- **Location of the Imgrd.exe file.** This file is located in "...\\License\\FLEXlm" folder where "..." refers to the COSMOS installation folder. It is recommended that the user does not remove any files from this sub directory.
- **Location of the license file.** It is recommended to keep the **license.dat** file (on the server machine) in the "...\\License" folder.
- **Location of the log file.** The end user can specify the location of the log file. The log file is useful for diagnosing and trouble-shooting license failures.
- **Location of the Options file.** The end user can customize the license usage through the options file. Please refer to the FLEXlm end user manual (...\\license\\flexlm\\enduser.pdf) to get more information about how to use an **Options** file, where "..." refers to the COSMOS installation folder.

After the license servers are installed and running, you can view the contents of the log file to verify the licensed features

Click **Configure COSMOS License Server** to point to the required files and host names of license servers.

Other buttons let you start, stop, re-read, and remove the license file, and display the log and license files.

Configuring Redundant License Servers

The *COSMOS License Scheme* allows you to configure alternate license servers.

The license file sent by COSMOS for a 3 host license server configuration looks as follows:

SERVER host1 005004ad342d 7585

SERVER host2 005004ad342e 7585

SERVER host3 005004ad342f 7585

VENDOR SRAC

FEATURE DS_PARTS SRAC 2.000 1-JAN-2002 4 6E812F40ED34

FEATURE DS_ASSEMBLIES SRAC 2.000 1-JAN-2002 4 E08336FC8FBE

where host1, host2 and host3 are the hostnames of the License Server machines at the end user site. To configure the 3 servers, the end user has to run the COSMOS License Administrator on each of the 3 machines.



The servers used to configure a redundant license should have excellent communications and should be on the same subnet. Often, this means that the servers should be located physically close to each other. This form of redundancy requires that the servers exchange heartbeats periodically. Poor communications cause poor performance. You should never configure redundant servers with slow communications or dial-up links.

To configure the license server on a machine:

- 1** Click **Start, Programs, COSMOS Applications, COSMOS License Administrator**.
- 2** Click the **Server Settings** tab.
- 3** Click **Install COSMOS License Server** (or **Configure COSMOS License Server**, if the license server is already installed).
- 4** The program detects the hostname of the machine executing the **COSMOS License Administrator**. However, you have to input the correct hostnames of the other two machines.
- 5** Click **OK** to install/configure the License Server.
- 6** Repeat steps 1 through 5 on the other two license server machines.
- 7** Check the log file to verify that the license servers are running.

Current Usage tab

The **Current Usage** tab allows a *License Administrator* (on a server) to list all the current users of the floating license of various COSMOS applications. This tab appears on the license server machine after the *COSMOS License Server Service* is installed. This tab is not activated for end users. Users of dongles, demo, and node-locked license are not listed.

Choose the desired product and click **List Users**. The table lists the product, user name, host, and the last checkout date and time.